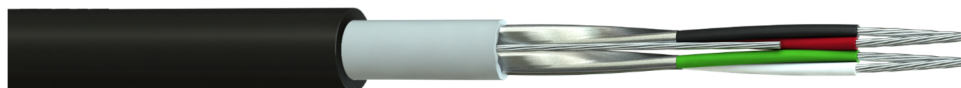


Part No: 2202PIFRD
Description: 2 x 2 x 22(7)AWG Individual Foil Screened Paired LSF/PE Duct Grade Data Cable .
 Suitable for Duct and External Applications.



Construction

Conductor Material	: Tinned Copper, 22(7)awg
Pair Insulation Material	: Polypropylene (PP)
Number of Pairs	: 2
Individual Screen	: Aluminium Foil, Each Pair (100% Coverage)
Common Drain Wire	: Tinned Copper, 24(7)awg
Inner Sheath Material	: Low Smoke and Fume (LSF)
Inner Sheath Colour	: Grey
Outer Sheath Material	: Polyethylene
Outer Sheath Colour	: Black
Core Identification	: Black/Red, Green/White
Alternative to Belden	: 8723

Electrical Characteristics

Nominal Conductor Resistance @20°C	: < 55.2 Ω/km
Insulation Resistance	: > 200MΩ.M
Capacitance	Core to core : 115 pF/m
	Core to screen : 203 pF/m
Voltage Rating	: 450/750V <i>Applies to CE marked FSC branded stock only</i>
Test Voltage	: 2.5kV for 5 minutes

Physical Characteristics

Overall Diameter	: 7.0 ± 0.2mm
Min. Bend Radius	: 10 x OD
Temperature Rating	: -20°C to +70°C
Weight	: 50 kg/km

Standards

RoHS2 Compliant	: Yes
CE Compliant	: LVD (2014/35/EU)
UV Resistance	: Good, ISO 4892-3†
Weather Resistance	: Good, ISO 4892-3†

†500 hour test duration, equivalent to 9-12 months of northern Europe climate.