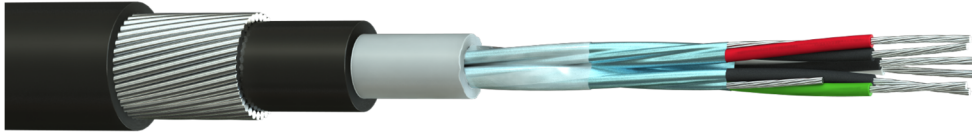


Part Number: 2203PIFRA-F00
Description: 3 x 2 x 22(7)AWG Three Pair Individually Foil Screened Armoured Direct Burial Data Cable



Construction

Conductor Material	: Tinned Copper, 22(7)awg
Insulation Material	: Polypropylene (PP)
Number of Pairs	: 3
Individual Screen	: Aluminium Foil, Each Pair (100% Coverage)
Drain Wire	: Tinned Copper, 22(7)awg
1 st Inner Sheath Material	: Low Smoke & Fume (LSF)
1 st Inner Sheath Colour	: Grey
2 nd Inner Sheath Material	: Polyethylene (PE)
2 nd Inner Sheath Colour	: Black
Armour	: Galvanised Steel Wire Armour (SWA)
Outer Sheath Material	: Polyethylene (PE)
Outer Sheath Colour	: Black
Core Identification	: Black/Red, Black/White, Black/Green
Alternative to Belden	: 8777, Armoured



Electrical Characteristics

Nominal Conductor Resistance	: < 60.2 Ω/km
Insulation Resistance	: > 200MΩ.M
Capacitance	Core to Core : 98 pF/m ± 25
	Core to Screen : 180 pF/m ± 40
Voltage Rating	: 450/750V <i>Applies to CE marked FSC branded stock only</i>
Test Voltage	: 2.5kV for 5 minutes

Physical Characteristics

Overall Diameter	: 13.2 ± 0.4mm
Min. Bend Radius	: 10 x OD
Temperature Rating	: -20°C to +70°C
Weight	: 330 kg/km

Standards

RoHS3 Compliant	: Yes
UV & Weather Resistant	: ISO 4892-3
CE Compliant	: LVD (2014/35/EU)
CPR Classification	: Fca (EN50575:2014+A1:2016)