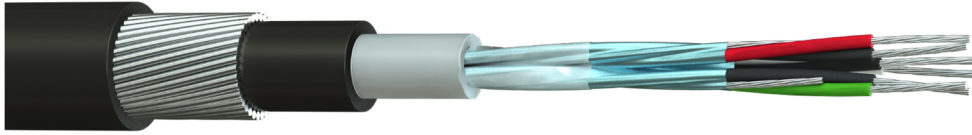


Part No: 2203PIFRA
Description: 2 x 2 x 22(7)AWG Individual Foil Screened Paired SWA Armoured Data Cable .
 Suitable for Direct Burials, Duct and External Applications.



Construction

Conductor Material	: Tinned Copper, 22(7)awg
Pair Insulation Material	: Polypropylene (PP)
Number of Pairs	: 3
Drain Wire	: Tinned Copper, 24(7)awg
Individual Screen	: Aluminium Foil, Each Pair (100% Coverage)
1 st Inner Sheath Material	: Low Smoke and Fume (LSF), Grey
2 nd Inner Sheath Material	: Polyethylene (PE), Black (RAL 9005)
Armour	: Galvanised Steel Wire, Helically Lapped
Outer Sheath Material	: Polyethylene (PE), Black (RAL 9005)
Core Identification	: Red & Black, Green & Black, White & Black
Alternative to Belden	: 8777

Electrical Characteristics

Nominal Conductor Resistance @20°C	: < 55.2 Ω/km
Insulation Resistance	: > 200MΩ.M
Impedance	: 50 Ω
Capacitance	Core to core : 98 pF/m
	Core to screen : 180 pF/m
Velocity of Propagation	: 66%
Voltage Rating	: 450/750V <i>Applies to CE marked FSC branded stock only</i>
Test Voltage	: 2.5kV for 5 minutes

Physical Characteristics

Overall Diameter	: 13.2 ± 0.2mm
Min. Bend Radius	: 10 x OD
Temperature Rating	: -20°C to +70°C
Weight	: 330 kg/km

Standards

RoHS2 Compliant	: Yes
CE Compliant	: LVD (2014/35/EU)