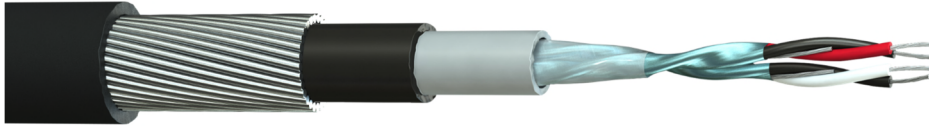


Part No: 2402PIFFA
Description: 2 x 2 x 24(7)AWG Individual Foil Screened Paired Armoured Data Cable. Low Capacitance.



Construction

Conductor Material	: Tinned Copper, 24(7)awg
Insulation Material	: Foamed Polyethylene (FPE)
Number of Pairs	: 2
Drain Wire	: Tinned Copper, 24(7)awg
Individual Screen	: Aluminium Foil, Each Pair (100% Coverage)
Individual Tape	: Polyester, Each Pair
Overall Tape	: Polyester
1 st Inner Sheath Material	: Polyvinyl Chloride (PVC), Grey
2 nd Inner Sheath Material	: Polyethylene (PE), Black (RAL 9005)
Armour	: Galvanised Steel Wire, Helical Lapped
Outer Sheath Material	: Polyethylene (PE), Black (RAL 9005)
Core Identification	: Red & Black, White & Black
Alternative to Belden	: 9729

Electrical Characteristics

Nominal Conductor Resistance @20°C	: < 86 Ω/km
Insulation Resistance	: > 200MΩ.M
Characteristic Impedance	: 100 Ω
Capacitance	Core to core : 41 pF/m
	Core to screen : 76 pF/m
Nominal Velocity of Propagation	: 76%
Voltage Rating	: 450/750V <i>Applies to CE marked FSC branded stock only</i>
Test Voltage	: 2.5kV for 5 minutes

Physical Characteristics

Overall Diameter	: 12.5 ± 0.3mm
Min. Bend Radius	: 10 x OD
Temperature Rating	: -30°C to +70°C
Weight	: 178 kg/km

Standards

RoHS2 Compliant	: Yes
CE Compliant	: LVD (2014/35/EU)