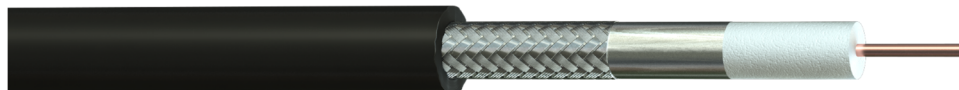


# Antennax ANT-600 50 Ohm Black PE Technical Datasheet

**Part No:** 390L60-F00  
**Description:** ANT-600 50 Ohm Antennax Polyethylene (PE) Black Coaxial Cable



## Construction

Conductor Material : Copper Clad Aluminium  
Conductor Size : 1/4.47 mm  
Dielectric : Foam Polyethylene (FPE)  
Diameter of Dielectric : 11.56 mm  
1<sup>st</sup> Screen Material : Bonded Aluminium Foil  
2<sup>nd</sup> Screen Material : Tinned Copper Wire Braid (>90% Coverage)  
Outer Sheath Material : Polyethylene (PE)  
Outer Sheath Colour : Black



## Electrical Characteristics

Impedance : 50  $\Omega \pm 2$   
Capacitance @ 1 kHz : 76 pF/m  $\pm 5$   
Velocity of Propagation : 85 %  
Conductor Resistance @ 20°C :  $\leq 1.8 \Omega / \text{km}$   
Screen Resistance @ 20°C :  $\leq 5.75 \Omega / \text{km}$   
Peak Power : 40.0 kW

### Attenuation @ 20°C

Frequency (MHz)	Attenuation (dB/100ft)	Attenuation (dB/100m)
30	0.5	1.6
50	0.6	2.0
150	1.0	3.2
220	1.2	3.8
450	1.7	5.6
900	2.5	8.2

Frequency (MHz)	Attenuation (dB/100ft)	Attenuation (dB/100m)
1500	3.3	10.8
1800	3.7	12.0
2000	3.9	12.7
2500	4.4	14.5
5800	7.2	23.6

### Return Loss @ 20°C

Frequency (MHz)	Return Loss (dB)
30-3000MHz	$\geq 15$

## Physical Characteristics

Overall Diameter : 15.0 mm ( $\pm 0.20\text{mm}$ )  
Bending Radius : 5 x OD  
Temperature Rating : -40°C to +75°C  
Weight : 200 kg/km

## Standards

RoHS3 Compliant : Yes  
UV & Weather Resistant : ISO 4892-3  
CE Compliant : CPR (305/2011)  
CPR Classification : Fca (EN50575:2014+A1:2016)

Part Number: 390L60-F00  
Date: 21/02/2020  
Revision: 1.2  
Author: GB Checked: GB  
Page Number: 1 of 1