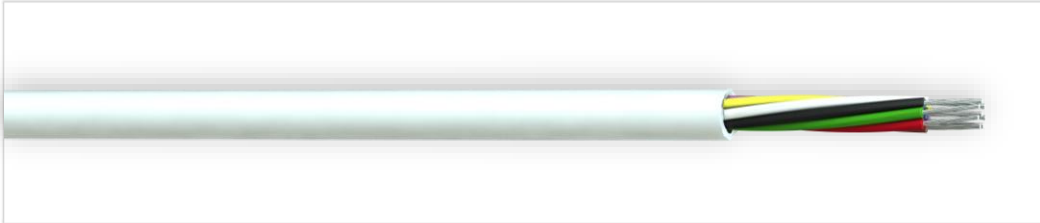


# LSF BURGLAR ALARM CABLE



truSECURITY

**PART REFERENCE** 39800206WL

## CONSTRUCTION

**CONDUCTOR** TINNED COPPER  
**CONDUCTOR SIZE** 0.22MM<sup>2</sup>  
**INSULATION** LSF/PVC  
**JACKET** LSF/PVC WHITE

## TECHNICAL

**WORKING VOLTAGE** 50V  
**MAXIMUM CURRENT** 1A  
**CONDUCTOR RESISTANCE** < 94.2 Ω/KM  
**INSULATION RESISTANCE** > 200 MΩ.M  
**TEMPERATURE RATING** -0 to +70°C (STATIC)

**COLOUR CODE**

**4 CORE:** RED, BLUE, YELLOW & BLACK  
**6 CORE:** RED, BLUE, YELLOW, BLACK, WHITE & GREEN  
**8 CORE:** RED, BLUE, YELLOW, BLACK, WHITE, GREEN, ORANGE & BROWN  
**12 CORE:** RED, BLUE, YELLOW, BLACK, WHITE, GREEN, ORANGE, BROWN, GREY, PINK, VIOLET & TURQUOISE

NO CORE	NOMINAL WEIGHT KG/KM	OVERALL DIAMETER (MM)
4	18	3.4
6	25	4.0
8	30	4.3
8	30	4.3
12	37	5.5