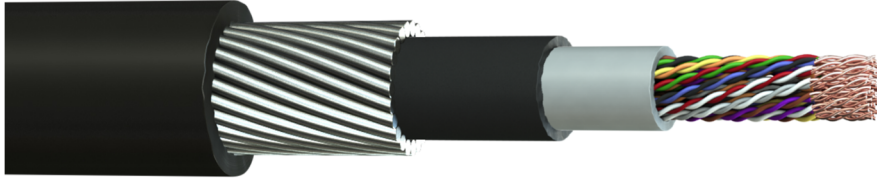


Part No: C525A
Description: The TruLan Cat 5E 25 Pair U/UTP armoured cable is the ideal choice for high speed data networks and is suitable for external applications and running through ducting or directly burying.

Construction

Conductor : Bare Copper
 AWG : 24(1)
 Insulation Material : High Density Polyethylene (HDPE)
 Number of Pairs : 25
 Pair Identification : See Table
 1st Inner Sheath Material : Polyvinyl Chloride (PVC)
 1st Inner Sheath Colour : Grey
 2nd Inner Sheath Material : Polyethylene (PE)
 2nd Inner Sheath Material : Black
 Armour : Galvanised Steel Wire Armour (SWA)
 Outer Sheath Material : Polyethylene (PE)
 Outer Sheath Colour : Black

Electrical Characteristics

Max. Conductor Resistance @ 20°C : ≤ 9.5 Ω/100m
 Max. Resistance Unbalanced : ≤ 2.5 %
 Nominal Impedance (1-100MHz) : 100 ± 15 Ω
 Mutual Capacitance : ≤ 5.6nF/100m
 Capacitance Unbalanced to Earth : ≤ 330 pF/ 100m
 NVP : 68.5 %
 Max. Delay Skew : ≤ 45 nS/ 100m
 Voltage Rating EN 50525-1 : 450/750V*
 Test Voltage : 2.5kV (AC)
 *Suitable for installation where Band II 450/750v cables are present. Not suitable for connection to mains supply

Physical Characteristics

Overall Diameter : 17.7 ± 0.8mm
 Bend Radius : Fixed 4 x OD Flexing 8 x OD
 Temperature Rating : Fixed -20°C to 60°C Flexing -10°C to 60°C
 Weight : 598 kg/km

Transmission Performance

Frequency	1	4	10	16	20	31.25	62.5	100	MHz
Attenuation	2.1	3.90	6.2	7.90	8.9	11.2	16.2	21.0	≤ dB
Return Loss	19.0	19.0	19.0	19.0	19.0	17.1	14.1	12.0	≥ dB
NEXT	60.0	54.8	48.5	45.2	43.7	40.5	35.7	32.3	≥ dB
PS NEXT	57.0	51.8	45.5	42.2	40.7	37.5	32.7	29.3	≥ dB
ACRF	58.6	46.6	38.6	34.5	32.6	28.7	22.7	18.6	≥ dB
PSACRF	55.6	43.6	35.6	31.5	29.6	25.7	19.7	15.6	≥ dB

Standards

RoHS3 Compliance : Yes | CE Compliant : LVD (2014/35/EU)

Part No: C525A

Description: The TruLan Cat 5E 25 Pair U/UTP armoured cable is the ideal choice for high speed data networks and is suitable for external applications and running through ducting or directly burying.



Colour Code

Pair No.		
1	White-Blue	Blue
2	White-Orange	Orange
3	White-Green	Green
4	White-Brown	Brown
5	White-Grey	Grey
6	Red-Blue	Blue
7	Red-Orange	Orange
8	Red-Green	Green
9	Red-Brown	Brown
10	Red-Grey	Grey
11	Black-Blue	Blue
12	Black-Orange	Orange
13	Black-Green	Green
14	Black-Brown	Brown
15	Black-Grey	Grey
16	Yellow-Blue	Blue
17	Yellow-Orange	Orange
18	Yellow-Green	Green
19	Yellow-Brown	Brown
20	Yellow-Grey	Grey
21	Violet-Blue	Blue
22	Violet-Orange	Orange
23	Violet-Green	Green
24	Violet-Brown	Brown
25	Violet-Grey	Grey