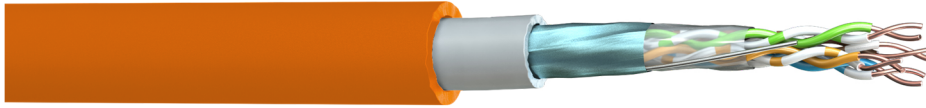


**Part No:** C5EFD08-F00

**Description:** The TruLan Cat 5E F/UTP cable is the ideal choice for high speed data networks and is suitable for external applications and running through ducting due to its heavy PE outer sheath.

**TESTED TO  
350MHz**



### Construction

Conductor	: Bare Copper
AWG	: 24(1)
Insulation Material	: High Density Polyethylene (HDPE)
Number of Pairs	: 4
Pair Identification	: White/Blue, Blue/White; White/Orange, Orange/White : White/Green, Green/White; White/Brown, Brown/White
Drain Wire	: 24(1)AWG Tinned Copper
Overall Screen	: Aluminium Foil (100% Coverage)
Inner Sheath Material	: Polyvinyl Chloride (PVC)
Inner Sheath Colour	: Grey
Outer Sheath Material	: Polyethylene (PE)
Outer Sheath Colour	: Orange



### Electrical Characteristics

Max. Conductor Resistance @ 20°C	: ≤ 9.5 Ω/100m
Max. Resistance Unbalanced	: ≤ 2.5 %
Nominal Impedance (1-100MHz)	: 100 ± 15 Ω
Mutual Capacitance	: ≤ 5.6nF/100m
Capacitance Unbalanced to Earth	: ≤ 330 pF/ 100m
NVP	: 68.5 %
Max. Delay Skew	: ≤ 45 nS/ 100m
Voltage Rating EN 50525-1	: 450/750V*
Test Voltage	: 2.5kV (AC)

\*Suitable for installation where Band II 450/750v cables are present. Not suitable for connection to mains supply

### Physical Characteristics

Overall Diameter	: 8.6 ± 0.3mm		
Bend Radius	: Fixed 4 x OD	Flexing	8 x OD
Temperature Rating	: Fixed -20°C to 60°C	Flexing	-10°C to 60°C
Weight	: 86 kg/km		

### Transmission Performance

Frequency	1	4	10	16	20	31.25	62.5	100	155	200	300	350	MHz
Attenuation	2.1	3.90	6.2	7.90	8.9	11.2	16.2	21.0	26.6	30.7	38.7	41.4	≤ dB
Return Loss	19.0	19.0	19.0	19.0	19.0	17.1	14.1	12.0	10.1	9.0	7.2	6.6	≥ dB
NEXT	60.0	54.8	48.5	45.2	43.7	40.5	35.7	32.3	29.2	27.3	24.4	23.2	≥ dB
PS NEXT	57.0	51.8	45.5	42.2	40.7	37.5	32.7	29.3	27.0	25.2	22.3	21.2	≥ dB
ACRF	58.6	46.6	38.6	34.5	32.6	28.7	22.7	18.6	17.5	15.3	11.8	10.5	≥ dB
PSACRF	55.6	43.6	35.6	31.5	29.6	25.7	19.7	15.6	11.8	9.6	6.1	4.7	≥ dB

### Standards

RoHS3 Compliance	: Yes	UV & Weather Resistance	: ISO 4892-3
CE Compliant	: LVD (2014/35/EU)	CPR Classification	: Fca (EN50575:2014+A1:2016)
Manufactured in accordance to	: TIA/EIA 568-C.2, ISO/IEC 11801		

FS Cables  
Shoal Export

01727 840 841  
+44 1727 849 841

sales@fscables.com  
sales@shoal-export.com

www.fscables.com  
www.shoal-export.com

Part Number: C5EFD08-F00  
Date: 09/01/2020  
Revision: 1.0  
Author: GB Checked: GB  
Page Number: 1 of 1

Information and images on this technical datasheet are intended for guidance only and products may vary due to manufacturing changes, technical improvements and commercial factors. We reserve the right to amend the product information without notice or liability.