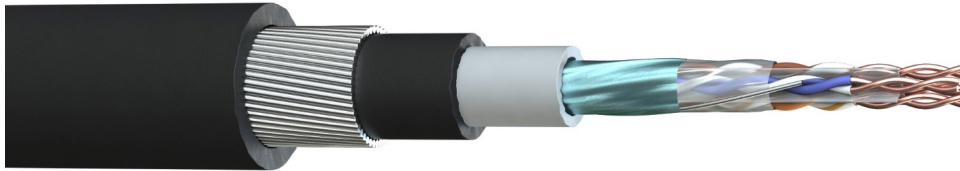


Part No: C6FA
Description: The TruLAN Cat 6 cable is the ideal choice for high speed data networks across a home or building. Suitable for direct burial.

**TESTED TO
500MHz**



Construction

Conductor	Bare Copper
AWG	23(1)
Insulation Material	High Density Polyethylene (HDPE)
Number of Pairs	4
Pair Identification	TIA 568
Overall Screen	Aluminium/Polyester
Drain Wire	24(1)AWG, Tinned Copper
1 st Sheath Material	Polyvinyl Chloride (PVC), Grey
2 nd Sheath Material	Low Density Polyethylene (LDPE), Black
Armour	Helical Galvanised Steel Wire
3 rd Sheath Material	Low Density Polyethylene (LDPE), Black

Electrical Characteristics

Max. Conductor Resistance @ 20°C	≤ 9.38 Ω/100m
Max. Resistance Unbalanced	≤ 2.5 %
Nominal Impedance (1-100MHz)	100 ± 15 Ω
Insulation Resistance	5000MΩ/km
Mutual Capacitance	≤ 5.6nF/100m
Capacitance Unbalanced to Earth	≤ 330 pF/ 100m
NVP	68.5 %
Max. Delay Skew	≤ 45 nS/ 100m
Voltage Rating EN 50525-1	450/750V*
Test Voltage	2.5kV (AC)

Physical Characteristics

Overall Diameter	15.5 ± 0.3mm		
Bend Radius	Fixed 6 x OD,	Flexing	10 x OD
Temperature Rating	Fixed -20°C to 70°C,	Flexing	-10°C to 60°C
Weight	315 kg/km		

Transmission Performance

Frequency	1	4	10	16	20	31.25	62.5	100	200	250	300	400	500	MHz
Attenuation	1.9	3.5	5.5	7.0	7.9	10.0	14.4	18.6	27.4	31.1	34	41.1	47.1	dB/100m
Return Loss	19.1	21.0	21.0	20.0	19.5	18.5	16.0	14.0	11.0	10.0	9.2	8.0	7.0	dB
NEXT	65.0	64.1	57.8	54.6	53.1	50.0	45.1	41.8	36.0	35.3	34.0	31.9	30.4	dB
PS NEXT	62.0	61.8	55.5	52.2	50.7	47.5	42.7	39.3	34.3	32.7	31.4	29.3	27.6	dB
ACRF	64.2	52.1	44.2	40.1	38.2	34.3	28.3	24.2	18.2	16.2	14.6	12.1	10.2	dB
PSACRF	61.2	49.1	41.2	37.1	35.2	31.3	25.3	21.2	15.2	13.2	11.6	9.1	7.2	dB

Standards

RoHS2 Compliance	Yes	UV Resistance	Good, ISO 4892-3†
CE Compliant	LVD (2014/35/EU)	Weather Resistance	Good, ISO 4892-3†
Manufactured in accordance to	TIA/EIA 568-C.2, ISO/IEC 11801		

*Suitable for installation where Band II 450/750v cables are present. Not suitable for connection to mains supply
 †500 hour test duration, equivalent to 9-12 months of northern Europe climate.

Tru Cables Tel: 01727 840 841 info@trucables.com www.trucables.com

Information and images on this datasheet are intended for guidance only and products may vary due to manufacturing changes, technical improvements and commercial factors. We reserve the right to amend the product information without notice or liability.

ISO 9001:2015 Certificate Number: DAS94272226/0/Q

Part Number: C6FA
 Date: 19/07/2017
 Revision: 1.1
 Author: Checked:
 Page Number: 1 of 2

Part No: C6FA
Description: The TruLAN Cat 6 cable is the ideal choice for high speed data networks across a home or building. Suitable for direct burial.

The 'truLAN' logo consists of the word 'tru' in grey and 'LAN' in red, both in a sans-serif font.