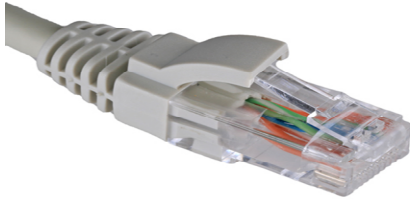


Part No: C6PHXXXX
Description: 24AWG Cat 6 U/UTP Snagless Booted Patch Lead LSHF

truACCESSORIES



Construction

Conductor : Bare Stranded Copper
 AWG : 24AWG (7)
 Insulation Material : Foam Skin FE
 Number of Pairs : 4
 Pair Identification : White/Blue, Blue/White; White/Orange, Orange/White
 : White/Green, Green/White; White/Brown, Brown/White
 Sheath Material : Low Smoke Halogen Free (LSHF)
 Sheath Colour : Replace XX after C6PH for the colour

00		04		08	
01		05		09	
02		06		10	
03		07			

Physical Characteristics

Overall Diameter : 5.9mm
 Temperature Rating : -20 °C to 60 °C

Part No.	Length (Meters)
C6PHXX003	0.3
C6PHXX005	0.5
C6PHXX010	1
C6PHXX015	1.5
C6PHXX020	2
C6PHXX025	2.5
C6PHXX030	3
C6PHXX040	4
C6PHXX050	5
C6PHXX080	8
C6PHXX100	10
C6PHXX150	15
C6PHXX200	20

For Cat 6 cables on bulk reels, browse our range of [TruHD](#) and [TruLAN](#) cables.

